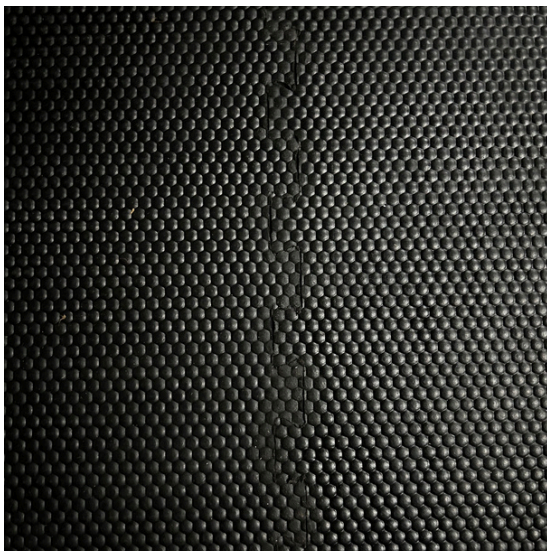
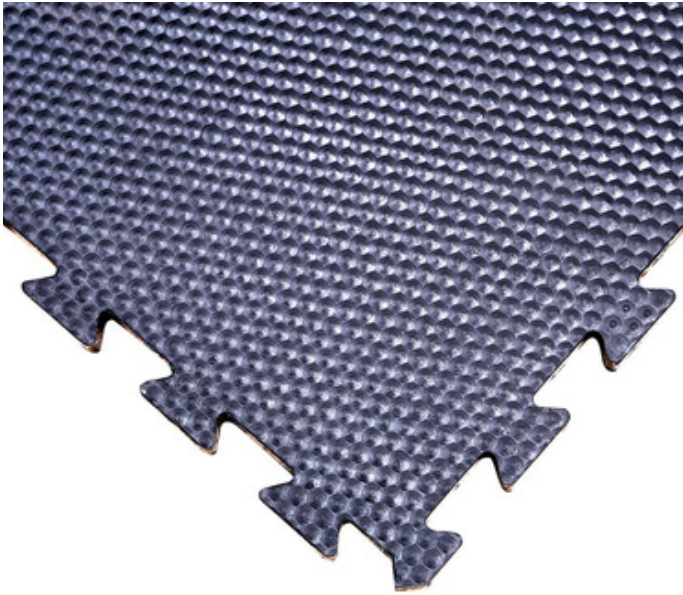


20mm Interlocking Stable Mats



Our new interlocking stable mats are the perfect solution for those looking for a easy self fit option.

The mats are 1m² from interlocking edge making them easier for maneuvering, they weigh 22kg each as they have been designed and manufactured to last and not move once interlocked together.

All you need for fitting is a sharp Stanley knife for trimming the interlocking edges of the perimeter. You can seal the mats around the perimeter for a tighter seal using Q/Flex if required.

Mats can be lifted and cleaned under as and when needed then simply interlock back together.

Thickness	Size	Profile	Weight	MPA	Per Pallet	Tail Lift
20mm	1m x 1m	Hammertop	22kg	4MPA	50	44

QUATTRO®

THE RUBBER & RESIN SPECIALIST

20mm Interlocking Stable Mats



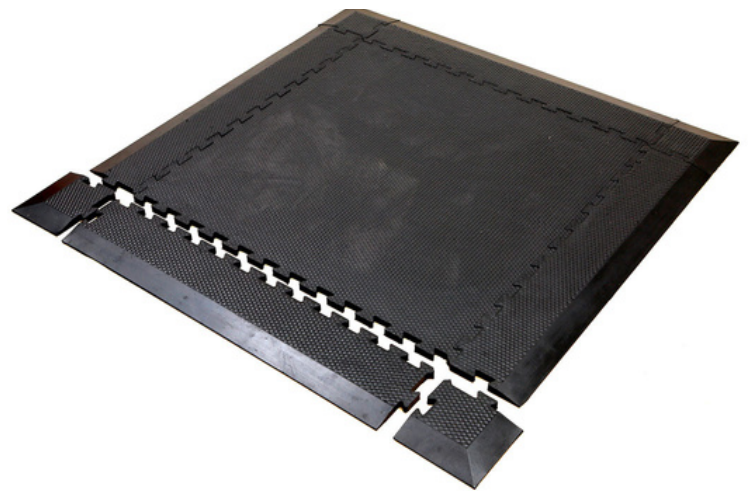
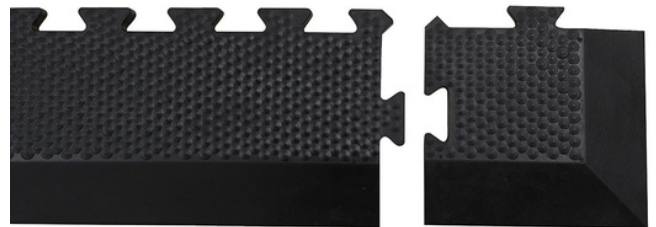
They provide safe, cushioned comfort and thermal insulation for horses.

The embossed top surface provides traction on feet. These mats are Non toxic, non absorbent, not affected by urine or concentrated disinfectants.

These interlocking rubber mats are ideal for horse trailers, stables, loose boxes, walkways etc.

Hammer top Interlocking Tiles can also be used in gyms, free weight areas, garages and workshops.

Bevelled Edges and Corner blocks are available to avoid trips and falls.



10 x 12 stable = 14 mats, 12 x 12 stable = 16 mats, 14 x 12 stable = 18 mats, 16 x 12 stable = 20 mats, 18 x 12 stable = 22 mats

Quattro Products Limited, Milestone House Industrial Estate, Penrith, Cumbria CA11 9NQ

www.quattro-rubber-and-resin.co.uk Tel: 01768864977 enq@quattro-rubber-and-resin.co.uk