

Sealed Stable Kit Instructions

Tools You Will Need



**Tape Measure, Sharp Stanley Knife,
600ML Barrel Gun & Gloves.**



Step One

ENSURE THE STABLE IS CLEAN AND DRY, SWEEP OR VACUUM UP EXCESS DIRT AND DUST. IF THE AREA IS EXTREMELY DUSTY SOMETIMES THE CONCRETE BASE BENEFITS FROM BEING PRIMED WITH Q/SEAL.

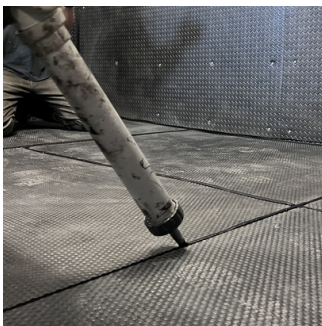
CONCRETE BASE MUST BE FLAT AND IN GOOD CONDITION. FLOOR MUST BE DRY.



Step Two

IT IS BEST TO CUT MATS IN LOOSE, COVERING THE FULL STABLE. START WITH FULL MATS AT THE FRONT OF THE STABLE THEN SMALLER CUTS ARE TO THE BACK AND THE SIDE AWAY FROM THE DOOR.

A STANLEY KNIFE WITH A SHARP BLADE IS THE BEST TOOL TO USE FOR CUTTING THE MATS. CHANGE THE BLADE AS SOON AS IT BECOMES DIFFICULT TO CUT.



Step Three

APPLY A BEAD OF Q/FLEX USING A BARREL GUN ALONG OPEN SIDES OF MATS BEFORE PUTTING THE NEXT MAT INTO PLACE.

CARRY ON UNTIL ALL THE MATS ARE IN PLACE ENSURING THAT THEY ARE PUSHED UP TIGHT.

USE THE Q/FLEX AROUND THE PERIMETER TO SEAL THE EDGE. SCRAPE OFF ANY Q/FLEX THAT SQUEEZES UP OUT OF THE JOINT. Q/FLEX SEALER LEFT ON THE TOP OF THE MATS WILL PEEL AWAY WHEN THE AREA IS PUT INTO USE.



Step Four

A DOORWAY STRIP IS SUPPLIED ALONG WITH FIXINGS. WITH SOME LEFT OVER Q/FLEX SET THE DOORWAY STRIP ONTO A BED OF Q/FLEX THEN DRILL INTO PLACE WITH THE FIXINGS SUPPLIED.

Once complete it is best to leave the stable 24 hours before using.

Need More Help - Call our office to discuss on 01768864977