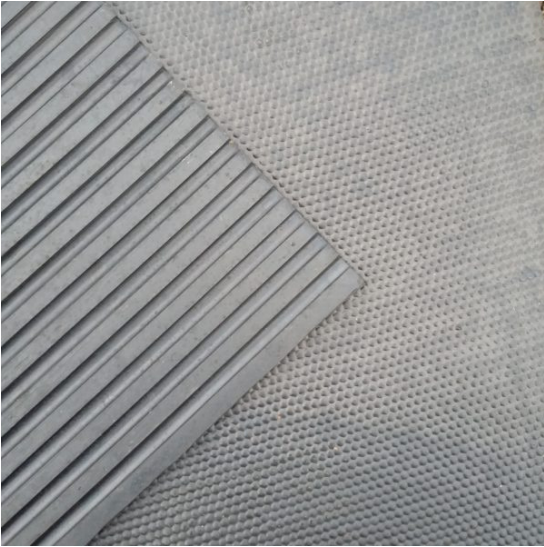


## Rubber Cow Mat's



- ✓ Provides protection and comfort for cattle
- ✓ Suitable for self installation
- ✓ Easy to clean
- ✓ Underside is grooved for drainage
- ✓ Made from heavy duty rubber

Supermats are our most popular option for cow cubicles.

Available in thicknesses of 18mm ideal for young stock & 22mm is our most popular option.

Supermats are a very robust heavy duty rubber mat with a tensile strength of 4Mpa which makes them denser than many standard mats that are available online.

The mats have a low profile 'Hammered' pattern on one side and a shallow grooved pattern on the other.

This matting holds great insulation properties as well as being very easy to clean.

Supermats are straight edge and easy to fit, we would recommend using heavy duty stainless steel fixings with washes, we find 8 fixings per mat works best.

| Thickness | Size        | Profile            | Weight | MPA  | Per Pallet | Tail Lift |
|-----------|-------------|--------------------|--------|------|------------|-----------|
| 18mm      | 1.8m x 1.2m | Low Hammer Pattern | 38kg   | 4mpa | 35         | 17        |
| 22mm      | 1.8m x 1.2m | Low Hammer Pattern | 42kg   | 4mpa | 30         | 14        |