

Flexscreed® Kits are supplied for an easy screed seamless rubber finish.

Standard kits are supplied with Rubber Granules & Superflex Membrane Binder & Sealer. However the binder & rubber granules can be mixed in varying ratios to meet differing requirements,

INTERNAL KIT CONTAINS:

**5 x 5kg Superflex Membrane or 2 x 10kg & 1 x 5kg Superflex Membrane (25kg altogether)
25kg bag rubber granules 1 to 3 mm**

Approx coverage 3m² @ 12-15 mm. Grout coat may go further dependant on depth of grout or texture required. A thick grout will give a smoother less textured finish.

EXTERNAL KIT: No sealer required so only 20kg Superflex Membrane per kit.

MIXING AND APPLICATION:

Tools: Metal float, roller, small paint brush, solvent and rag, mixing drill and paddle, large plastic drum.

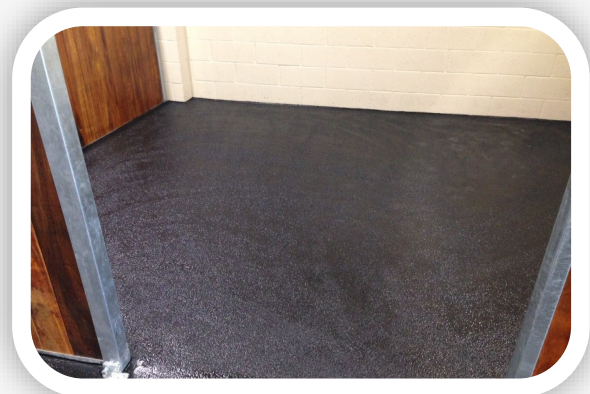
PREPARATION:

Ensure all areas to be screeded are clean and dry. Mask off as required. If subbase is very dusty or weak a primer coat of Q/Seal P1 prior to the application of the Flexscreed Kit will be required. 2.5lts Q/Seal P1 covers approx 20m².

MIXING:

There are 5 x 5kg units of Superflex resin & hardener within the kit or 2 x 10kg & 1 x 5kg. This has been formulated to allow a smaller half bag (12.5kg) rubber mix. 10 KG SUPERFLEX MEMBRANE to half a bag (12.5 kg) rubber.

Full mixing and application instructions on the next page.



Equestrian • Agricultural • Gym • Play

Quattro Products Limited, Milestone House Ind Est, Penrith, Cumbria, CA11 9NQ

Tel: 01768864977 Email: enq@quattro.org.uk Web: www.quattro.org.uk



If you have a mixer large enough the mix would be 20kg of Superflex Membrane to 1 full bag of rubber 25kg. The following instructions are for a half mix that can be mixed in a large plastic mixer drum with a plaster mixer or large drill & paddle. If Q/Seal Primer is required allow the primer to tack off prior to application.

1/2 mix:

Split the bag of rubber granules into two halves (2 x 12.5kg). Locate 2 x 5kg units or 1 x 10kg unit of **Superflex Membrane** resin & hardener. Tip resin & hardener into large mixing drum & mix thoroughly with drill & paddle ensuring it is well agitated in corner & bottom of mixing drum. Once mixed add in one of the half bags of rubber granules then mix with drill & paddle until there are no wet balls of rubber & resin. It does mix quickly & easily.

Once Mixed:

Spread onto the subbase with a metal float to achieve a depth of 12-15 mm, spread lightly to achieve depth first before applying pressure to close up tighter. A rag with a small amount of smoothing agent or thinners to wipe on the trowel will aid finishing.

This mix will not fully close up as texture is required to receive the grout coat the following day. Each width is then laid as above.

The Flexscreed® will take 8 to 12 hours to cure dependant upon temperature.

If for Internal use locate 5kg unit of **Superflex Membrane**. Mix the resin & hardener thoroughly, once mixed grout over the surface of the pre-laid Flexscreed® base tightly with the edge of a metal float & leave until cured (a light back roller will give a more textured finish).

Accelerators can be used in critical time areas, contact Quattro.

The above instructions are for a standard mix but it is possible to lay with thinner or wetter mixes.

E.g.: 1 - The addition of approx 3 to 5kg rubber granules to 5kg of Superflex Membrane may be spread at approx 4mm to give a strong textured surface screed/coating or as a more textured surface finish.

Quattro also have black Q/Flex sealer for joints & where screed may adjoin a uneven wall. These are available in 600ml sausages & 310ml cartridges.

Coloured systems can also be supplied.

ALL FLEXSCREED® COMPONENTS CAN BE PURCHASED SEPARATELY

IF NOT SURE PLEASE CONTACT OUR OFFICE AND WE CAN ADVISE



Equestrian • Agricultural • Gym • Play

Quattro Products Limited, Milestone House Ind Est, Penrith, Cumbria, CA11 9NQ

Tel: 01768864977 Email: enq@quattro.org.uk Web: www.quattro.org.uk

