

COVERTECT PC

DESCRIPTION Covertect PC is a flexible but highly abrasion resistant polyurethane floor seal for application to concrete, wood, grano and composition flooring. Covertect PC is a true 2 pack chemically reacted system that out performs other coatings.

COVERTECT PC A two pack coloured polyurethane seal with excellent covering power available in gloss or silk finish.

COMPOSITION high solids, high flash point (44 Deg C), solvent containing polyurethane liquid of low viscosity.

APPEARANCE Clear/coloured gloss finish.

DURABILITY Covertect PC has an extremely high abrasion resistance and will withstand heavy traffic for prolonged periods. It is Considerably superior to conventional oil and water based floor paints. With primers can be used over metal. Has good resistance to oils, acids and alkalis, moisture curing urethane and acrylic/urethane and water based epoxies.

THICKNESS – average 90 um per coat.

TYPICAL INSTALLATIONS Covertect PC not only seals but penetrates old and porous concrete acting as a strengthening binder and reinforcer. It is ideal for use as a sealer in warehouses, storage areas, trucking lanes etc. Covertect PC provides an attractive dust free low cost finish which is ideal for light duty work areas. It is readily cleaned and maintained giving a hygienic surface finish.

SUBSTRATES PREPARATION Covertect PC bonds well to concrete, grano, wood and metals. It should not be used directly on asphalt without prior priming with Prime DS, or metal without corroseal primer. **SURFACE PREPARATION** To be assured of maximum adhesion and properties from Quattro Resin products the correct surface preparation is essential. Please refer to technical data sheet "Surface Preparation" reference TD102.

APPLICATION CONDITIONS Covertect PC contains solvents and should only be used in well ventilated areas. Application temperature 0 – 30 DEG C

PRIMING Covertect PC does not usually require a primer but on well compacted non-porous concrete, an addition of 20% Q/solve is recommended to assist penetration of the first coat.

MIXING Add the full contents of the Covertect PC hardener container to the full contents of the Covertect PC resin container and stir thoroughly for minimum of two minutes.

APPLICATION TECHNIQUES Transfer the mixed product into a paint tray and apply by brush or roller, pushing the Covertect out as thinly as possible. Avoid "pooling" as this will produce soft spots.

TECHNICAL DATA

40um Film Hardness (DIN 53157)	170 sec
Taber Abrasion Loss (Cs17, 1000 rpm, 1000g)	3-5 mg (dry)
Solids Content	70%

CURE SCHEDULE

Usable life at 20 Deg C	240 minutes
Touch – Dry Film Time @ 20 Deg C	4 – 6 hours
Intercoat Period	4 – 24 hours
Foot Traffic	16 hours
Heavy Traffic	36 hours
Full Cure	3 – 4 days

SPECIFICATION DETAIL Porous, Uneven Concrete – Apply 2 or 3 coats Covertect at an average rate of 7 sq. m. per kg. Average Substrates – Apply 2 or 3 coats Covertect at an average rate of 9 sq. m. per kg.

MAINTENANCE Covertect floors can be readily cleaned by mopping with a proprietary detergent solution.

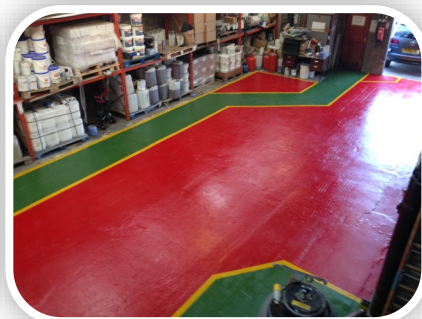
CHEMICAL RESISTANCE Covertect exhibits good resistance to a wide range of chemicals, oils, petrol etc., but it is not recommended as a chemical resistant finish. Floor seals can be readily damaged by impact and chemicals then attack the concrete from underneath the seal.

GRADES AVAILABLE The rate of film cure of Covertect PC may be accelerated by the addition of Covertect Accelerator at 250 g per 5.5 kg of Covertect PC. Whilst this will increase the rate of film cure by approx 30%, the working life (pot life) of the mixed product will be proportionately reduced.

COVERAGE RATES

Average	7– 9
Substrate	
Porous	5 – 7

COLOURS AVAILABLE: RED, GREEN, YELLOW, MID GREY, DARK GREY, MID GREEN BLUE & MID BLUE



HEALTH AND SAFETY Please read technical data sheet reference TD103 and specific health and safety data for this product provided in compliance with the requirements of EC Directive 91/155. **STORAGE, MIXING & APPLICATION** The storage, mixing and application conditions can affect the quality of the finish produced. Please read Technical data sheet. For further information on this or any other Quattro product, please contact our Customer Care Department on 01768 864977.